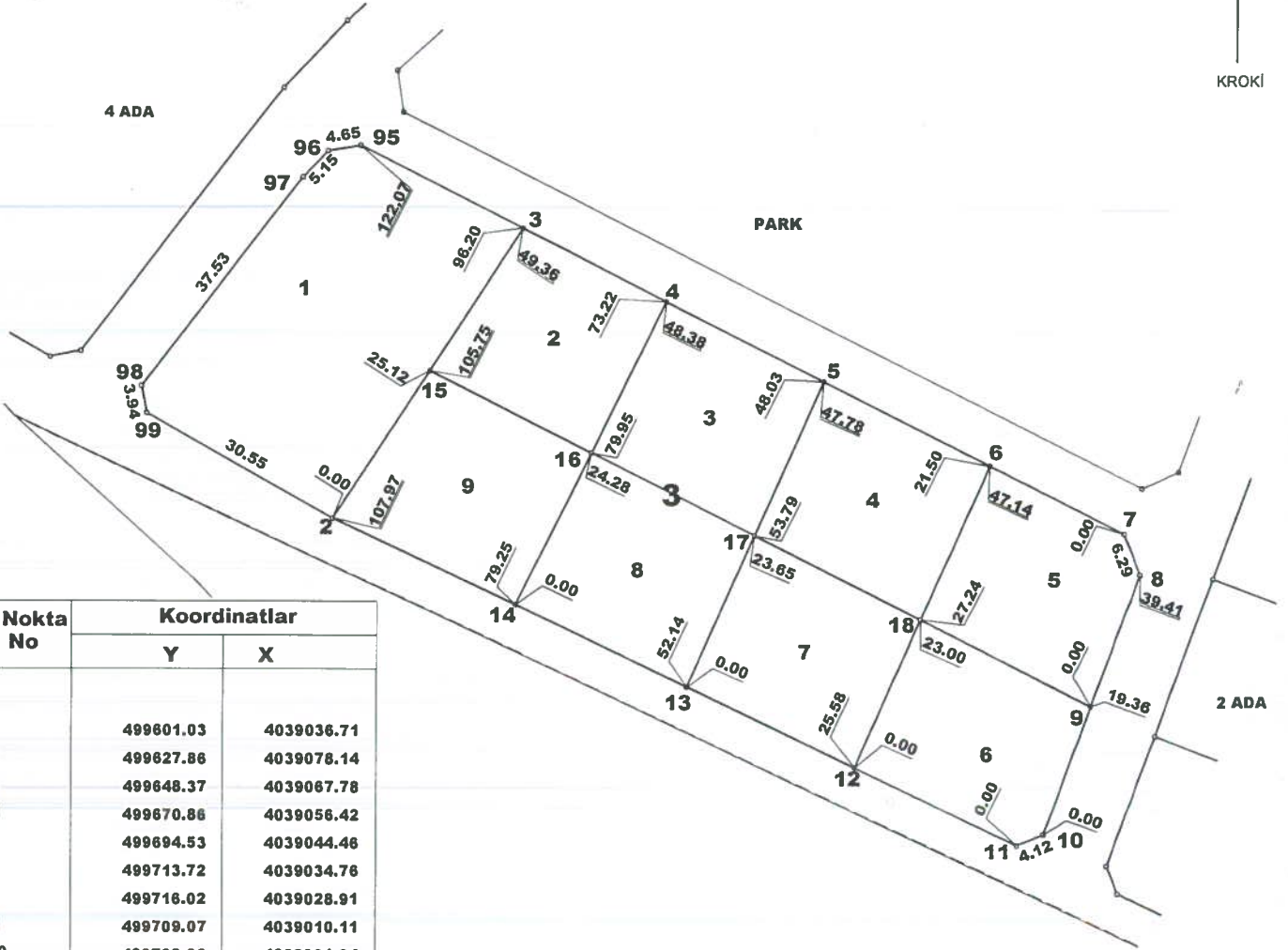


İLİ	HATAY	3 ADA ÖLÇÜ KROKİSİ
İLÇESİ	ARSUZ	
MAH/KÖY	AŞAĞI KEPİRCE	
PAFTA NO	P35-B05-B-3-B	
ADA/PARSEL	2659/30 - 56 +57	



KROKİ



Nokta No	Koordinatlar	
	Y	X
2	499601.03	4039036.71
3	499627.86	4039078.14
4	499648.37	4039067.78
5	499670.86	4039056.42
6	499694.53	4039044.46
7	499713.72	4039034.76
8	499716.02	4039028.91
9	499709.07	4039010.11
10	499702.36	4038991.94
11	499698.55	4038990.38
12	499675.45	4039001.35
13	499651.46	4039012.75
14	499626.97	4039024.38
15	499614.68	4039057.80
16	499637.71	4039046.16
17	499661.06	4039034.36
18	499684.76	4039022.39
95	499604.77	4039089.81
96	499600.19	4039089.01
97	499596.64	4039085.28
98	499573.67	4039055.61
99	499574.43	4039051.74

DÜZENLEYEN	UYGUNDUR BELEDİYE/ÖZEL İDARE	
	KONTROL EDEN	ONAYLAYAN
ADI SOYADI	BES İMAR İNŞAAT	
TARİH	Yatırım Sanayi ve Tic. Ltd. Şti.	
İMZA	Asım Gündüz V.D. 166,001 6319 Fatih Mah. Akdeniz Yapı Korp. Blوک No:2 Denizciler/İSKENDERUN	